

DESCRIZIONE / DESCRIPTION

Valvola a sfera da incasso a passaggio totale F/F sfera estraibile.
con cappuccio e rosone cromati – 2570
con deviatore e rosone cromati – 2580
con maniglia e rosone cromati – 2590
*Explorable full way built-in ball valve F/F
with cover plate and top chromium plated – 2570
with cover plate and lever chromium plated – 2580
with cover plate and handle chromium plated - 2590*

FOTO / PICTURE



2570



2580



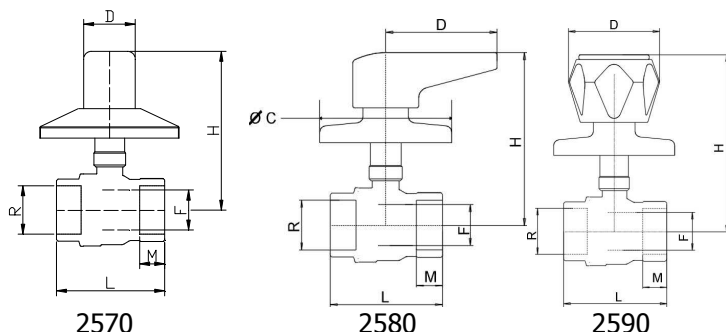
2590

CARATTERISTICHE / FEATURES

- corpo, sfera e asta in ottone.
- sfera lavorata con utensile in diamante, cromata.
- sedi in P.T.F.E. vergine con angolo di tenuta di 7° min.
- guarnizione tenuta asta: O-ring in gomma NBR
- leva di comando in metallo lucidato e cromato.
- finitura superficiale gialla
- filettature ISO 228/1
- PN 16: TEMP. : -20°C ÷ 120°C

- brass body, ball, stem.
- ball ground by diamond-tipped tool, chromium plated.
- virgin P.T.F.E. seats with 7° min. tightness angle.
- O-ring stem packing in NBR rubber.
- Metal handle polished and chromium plated.
- Yellow finishing.
- threading to ISO 228/1.
- PN 16: TEMP. : -20°C ÷ 120°C

DIMENSIONI PRINCIPALI / LEADING DIMENSIONS



R"	D	H	D	H	D	H	L	M	F
	2570	2570	2580	2580	2590	2590			
1/2"	26	80	69	59	47	55	54	12	14

PRESSIONI DI ESERCIZIO A MAX 80°C / WORKING PREASSURES AT 80°C

PN 30							p.s.i. 435
PN 25	*						p.s.i. 350
PN 16							p.s.i. 300
	1/2"	3/4"	1"	1 1/4"	1 1/2"	2"	



PERDITE DI CARICO / PRESSURE DROPS

R"	1/2	3/4	1	1 1/4	1 1/2	2
Kv	15				-	-

$$\Delta P [\text{mm H}_2\text{O}] = 10.000 \times \left[\frac{G [\text{mc/h}]}{Kv} \right]^2$$