

### DESCRIZIONE - DESCRIPTION

Mini valvola a sfera serie Mignon F/F-M/F  
cromata lucida con leva in alluminio nera

*MIGNON ball valve polished chrome mini F/F-M/F  
black aluminium lever*



2340N

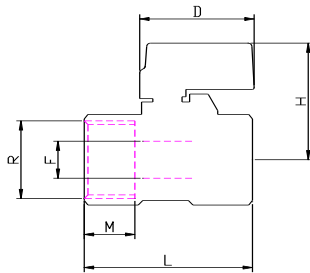


2350N

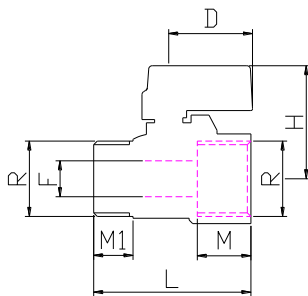
### CARATTERISTICHE - FEATURES

- corpo, sfera, e asta in ottone CW617N.
- sfera lavorata con utensile in diamante, cromata.
- sedi in P.T.F.E. vergine dimensionate con angolo di tenuta di 7° min.
- guarnizione tenuta asta: o-r in gomma NBR
- leva di comando in alluminio nera.
- finitura superficiale cromata lucida
- filettature ISO 228/1
- PN 10: TEMP. : -20°C ÷ 120°C
- brass CW617N body, ball, and stem.
- ball ground by diamond-tipped tool, chromium plated.
- virgin P.T.F.E. seats with 7° min. tightness angle.
- o-ring stem packing in NBR rubber.
- Aluminium lever with black plastic coating
- *Polished chrome finishing*
- threading to ISO 228/1.
- PN 10: TEMP. : -20°C ÷ 120°C

### DIMENSIONI PRINCIPALI - LEADING DIMENSIONS



R	1/4	3/8	1/2
D		32	32
H		30	30
L		42	46
M		10	11
F		7	10



R"	1/4	3/8	1/2
D		32	32
H		30	30
L		42	46
M		10	11
F		7	10

### PERDITE DI CARICO - PRESSURE DROPS

R"	1/4	3/8	1/2	3/4	1
Kv	/	3	5.5	/	/

$$\Delta P [\text{mm H}_2\text{O}] = 10.000 \times \left[ \frac{G [\text{mc/h}]}{Kv} \right]^2$$