

DESCRIZIONE / DESCRIPTION

Rubinetto sotto-lavabo ad angolo a sfera in ottone stampato, cromato lucido.

Under washer-basin angle ball valve made of forged brass, chromium plated

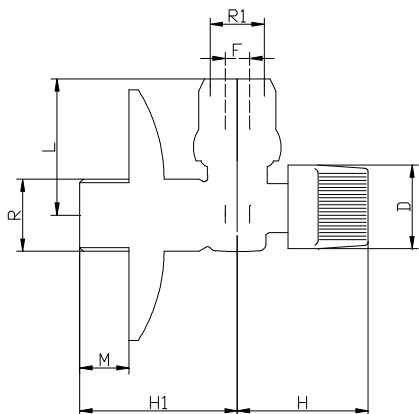
FOTO / PICTURE



**CARATTERISTICHE / FEATURES
COMPONENTI / COMPONENTS**

- corpo, sfera, asta e calotta in ottone CW617N.
 - sfera lavorata con utensile in diamante, cromata.
 - sedi in P.T.F.E. vergine
 - guarnizione tenuta asta: o-r in gomma NBR
 - maniglia in ABS cromato
 - rosone in acciaio inox
 - filettature ISO 228/1
 - PN 10: TEMP. : -10°C ÷ 90°C
- brass CW617N body, ball, nut, and stem.
 - ball ground by diamond-tipped tool, chromium plated.
 - virgin P.T.F.E. seats
 - o-ring stem packing in NBR rubber.
 - ABS handle, chromium plated
 - Stainless steel base ring
 - threading to ISO 228/1.
 - PN 10: TEMP. : -10°C ÷ 90°C

DIMENSIONI PRINCIPALI / LEADING DIMENSIONS



R"xR1	1/2"x10	1/2"x15
F	7	7
L	39	41
H1	45	45
H	35	35
M	14	14
D	24	24