

DESCRIZIONE / DESCRIPTION

Valvola a sfera a passaggio totale FXF con leva

Full way ball valve FXF with lever

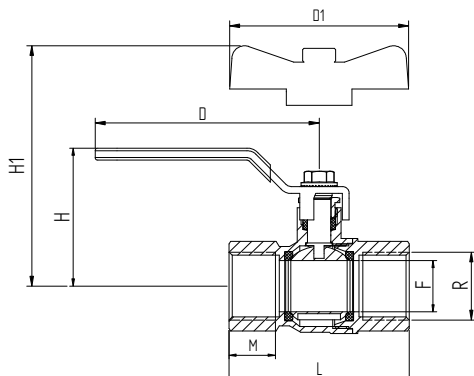
FOTO / PICTURE



CARATTERISTICHE / FEATURES

- corpo,manicotto e sfera in CW617N.
- premistoppa e asta in CW614N.
- sfera lavorata con utensile in diamante, cromata.
- sedi in P.T.F.E. vergine dimensionate con angolo di tenuta di 7° min.
- guarnizione tenuta asta: anello in PTFE.
- leva di comando in alluminio plastificato con resina epossidica rossa (T) leva in acciaio plastificato rosso (ST).
- finitura superficiale sabbiata nichelata, filettature gialle.
- filettature ISO 228/1
- PN 30, max. temp. -20° +130°C
- *brass CW617N body end connection and ball.*
- *brass CW614N stuffing box and stem.*
- *ball ground by diamond-tipped tool, chromium plated.*
- *virgin P.T.F.E. seats with 7° min. tightness angle.*
- *stem tightness: PTFE ring.*
- *aluminium lever red (T), steel lever with red plastic coating (ST).*
- *nickel plated finishing with yellow threads.*
- *threading to ISO 228/1.*
- *PN 30, max. temp. -20° + 130°C*

DIMENSIONI PRINCIPALI / LEADING DIMENSIONS



R"	1/2	3/4	1	1 1/4	1 1/2	2
D	85	85	114	114	142	142
D1	54	54	70			
H	47	50	61	70	76	88
H1	37	40	48.5			
L	57	63	75	89	98	119
M	15	16	18	20	21	25
F	15	20	25	32	40	50

PRESSIONI DI ESERCIZIO A MAX 80°C / WORKING PREASSURES AT 80°C

PN 40	*	*	*								p.s.i. 600
PN 30				*	*	*					p.s.i. 435
PN 25											p.s.i. 350
PN 20											p.s.i. 300
PN 16											p.s.i. 250
PN 10											p.s.i. 150
	1/2"	3/4"	1"	1 1/4"	1 1/2"	2"	2 1/2"	3"	4"		

PERDITE DI CARICO / PRESSURE DROPS

R"	1/2	3/4	1	1 1/4	1 1/2	2	2 1/2	3	4
Kv	15	30	57.5	94	160	265	-	-	-

$$\Delta P [\text{mm H}_2\text{O}] = 10.000 \times \left[\frac{G [\text{mc/h}]}{Kv} \right]^2$$