

### DESCRIZIONE - DESCRIPTION

Mini valvola a sfera acciaio inox AISI 316

Stainless steel AISI 316 mini ball valve



2308B

2318B

### CARATTERISTICHE - FEATURES

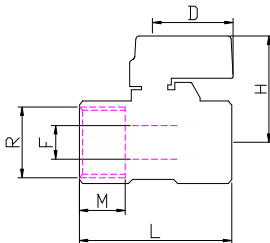
- Corpo - Body AISI 316
- Ghiera - Ring AISI 316
- Sfera - Ball AISI 316
- Sedi - Seats PTFE
- O-ring
- Leva - Lever AISI 316

- *Temperatura d'esercizio / Temperature: -10° + 120°C*
- *Pressione massima / Max pressure: 63 bar*
- *Filettature / Thread : ISO 228/1*

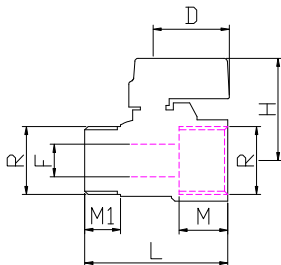
IMPIEGHI: Le mini valvole sono adatti per impieghi industriali, chimici, ed alimentari.

APPLICATIONS: The 2308-2318 series are suitable for use in industrial, chemical and food plants.

### DIMENSIONI PRINCIPALI - LEADING DIMENSIONS



R	1/4	3/8	1/2
F	6	8	10
L	40	40	46
H	26	26	28
M	9	10	11
D	22	22	22



R	1/4	3/8	1/2
F	0	0	0
L	40	40	46
H	26	26	28
M	9	10	11
D	22	22	22