

DESCRIZIONE - DESCRIPTION

Valvola a sfera attacco pompa F maniglia a T
Ball valve pump connection F with T handle

Valvola a sfera attacco pompa c/ritegno F maniglia a T
Ball valve pump connection with check valve and T handle



1015

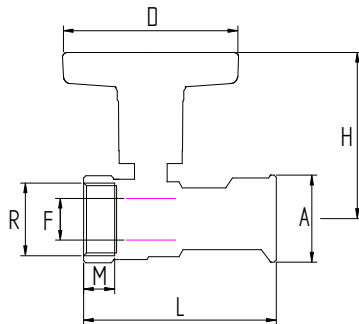


1016

CARATTERISTICHE - FEATURES

- corpo, manicotto e sfera, in ottone CW617N.
- asta in ottone CW614N
- sfera lavorata con utensile in diamante, cromata.
- sedi in P.T.F.E. vergine dimensionate con angolo di tenuta di 7° min.
- guarnizione tenuta asta: O-ring in gomma EPDM
- leva di comando in Nylon
- finitura superficiale sabbata nichelata
- filettature ISO 228/1
- PN 16: TEMP. : -20°C ÷ 120°C
- *brass CW617N body, bonnet and ball.*
- *Brass CW614N stem*
- ball ground by diamond-tipped tool, chromium plated.
- virgin P.T.F.E. seats with 7° min. tightness angle.
- O-ring stem packing in EPDM rubber.
- Nylon lever
- *Nickel plated finishing*
- threading to ISO 228/1.
- PN 16: TEMP. : -20°C ÷ 120°C

DIMENSIONI PRINCIPALI - LEADING DIMENSIONS



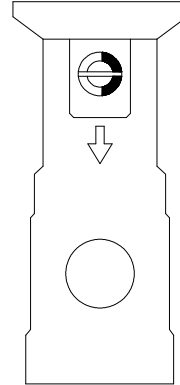
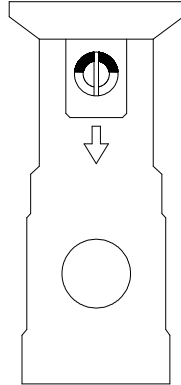
RxA	1"x1 1/2"	1 1/4"x1 1/2"	1 1/4"x2"
D	82	82	
H	75	75	
L	90	92	
M	15	15	
F	19	19	
A	44.8	44.8	

PRESSIONI DI ESERCIZIO A MAX 90°C - WORKING PREASSURES AT 90°C

PN 20				p.s.i. 300
PN 16	*	*		p.s.i. 250
PN 10				p.s.i. 150
	1"x1 1/2"	1 1/4"x1 1/2"	1 1/4"x2"	

APERTO-OFFEN
ritegno bloccato per scarico fluido

AUTO
ritegno libero



PERDITE DI CARICO – FLOW AND PRESSURE DROPS

R"	1"	1 1/4"	
Kv 1015	28	48	
Kv 1016	7	10.5	

